

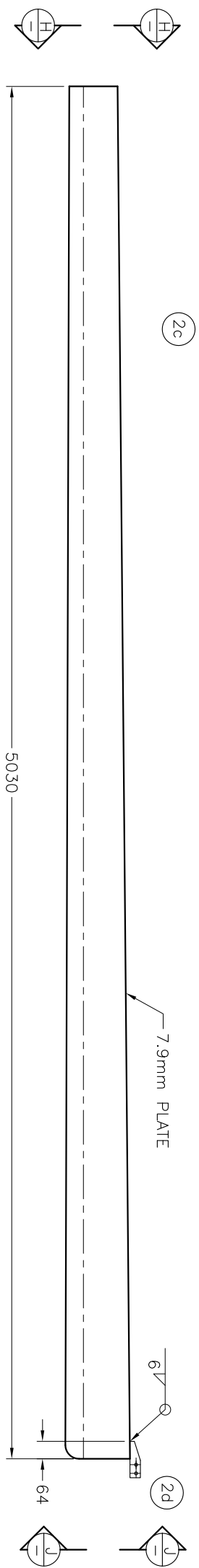
MATERIAL: RESTRICT SILICON OF SHAFTS 0-0.04%  
OTHER PARTS 0-0.04% OR 0.15-0.22%  
WELDING: CSA W59, W47.1  
FINISH: GALVANIZE ASTM A123

NOTES:  
- ALL UNITS METRIC(mm) UNLESS OTHERWISE STATED  
- CLEAN THREADED HOLES AND BOLTS AFTER GALV.  
- A325 JOINER BOLTS - SNUG TIGHT PLUS 1/3 TURN-OF-NUT  
- ANCHOR BOLTS BY OTHERS: φ1.5" x 72" AISI/SAE 4140 Fy = 560 MPa  
- USE DUTTON-LANINSON WG 2000 WINCH TO RAISE AND LOWER ARM WITH STEADY ACTION OF CRANK  
- φ9/32" GALVANIZED CABLE MINIMUM LENGTH 10.67m

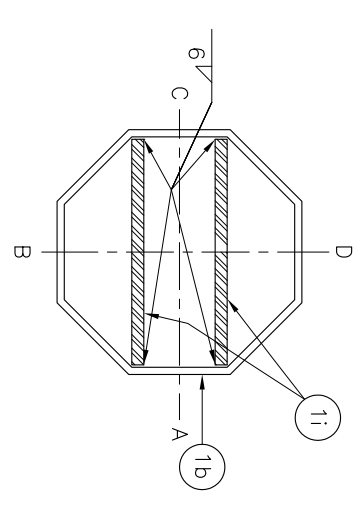
LOADING:  
- POLE SUPPORTING FOUR SOLAR PANELS AT 65" WIDTH x 39" HEIGHT AND 47 lbs EACH IS DESIGNED FOR 160km/h WIND SPEED IN ACCORDANCE WITH AASHTO STD. SPECIFICATION FOR STRUCTURAL SUPPORTS FOR HIGHWAY SIGNS, LUMINAIRES AND TRAFFIC SIGNALS

BASE LOADS (UNFACTORED)  
Fx = 2.7 kN  
Fy = 13.5 kN  
Fz = 8.5 kN  
Mx = 118.6 kNm  
My = 27.7 kNm  
Mz = 9.6 kNm

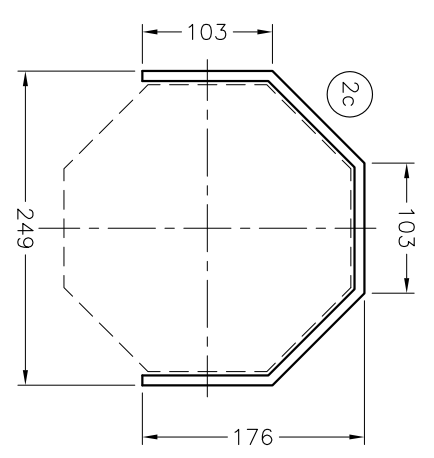
B BRACKET ORIENTATION		MAR15/11		SOLAR PRODUCTION EQUIPMENT	
A AS PER CMT		MAR11/11			
REV	DATE	OCTAGONAL HINGE POLE - NOH 40 FOR 4 SOLAR PANELS			
DRAWN	DATE				
HW	DATE				
CHECKED	CLY	MAR09/11	SCALE	S.O.	11411
CONTRACTOR					



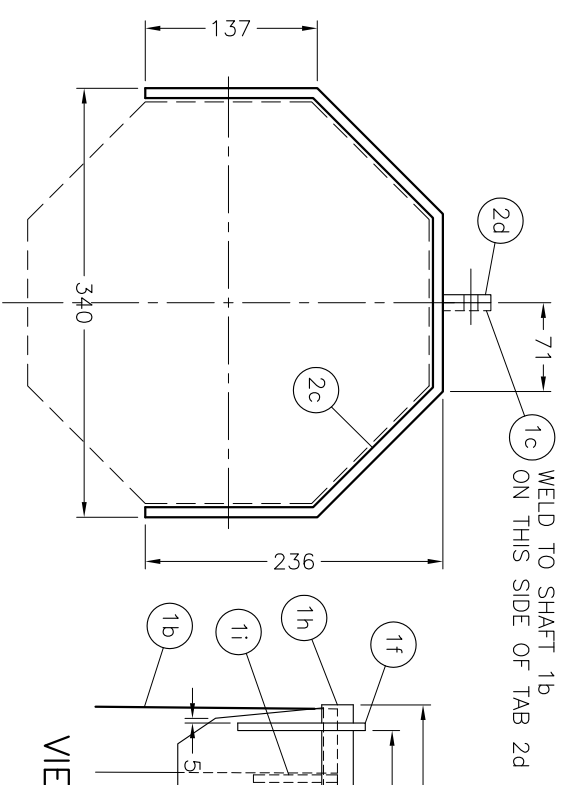
CANTILEVER SHELL & REINFORCEMENT



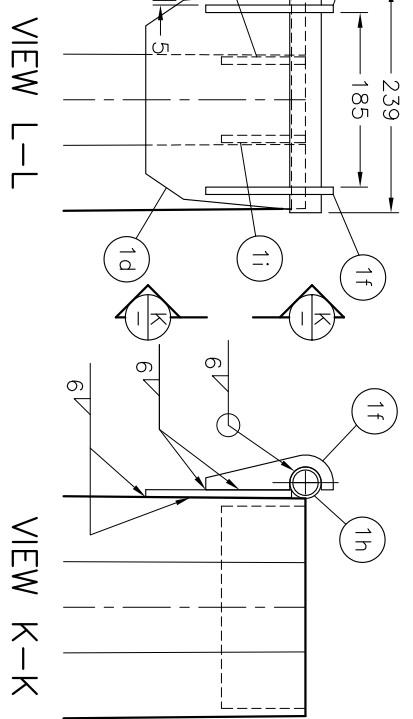
SECTION B-B



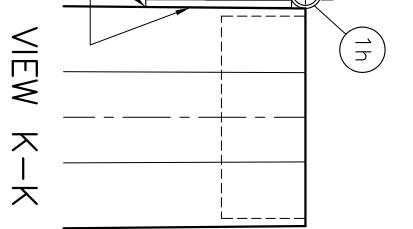
SECTION H-H



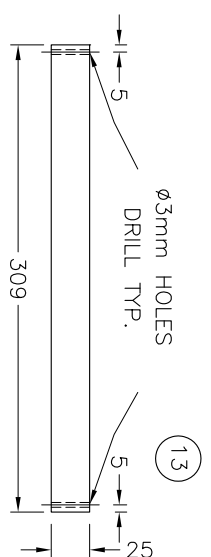
SECTION J-J



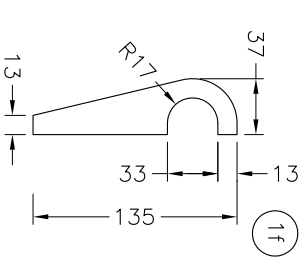
VIEW L-L



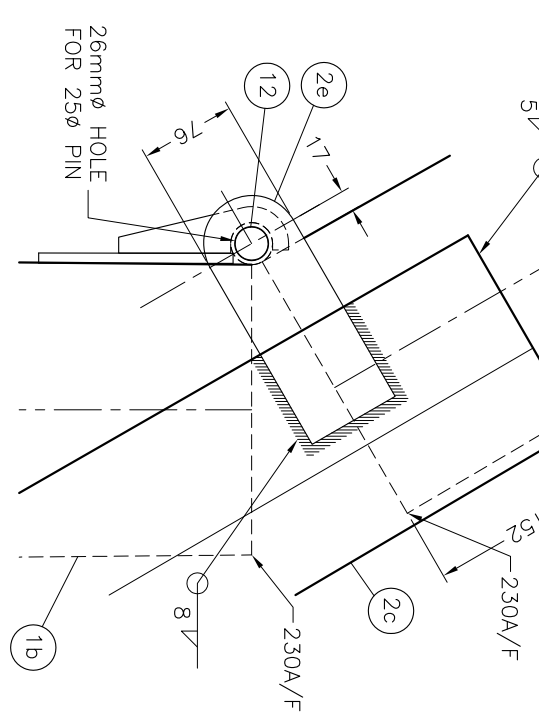
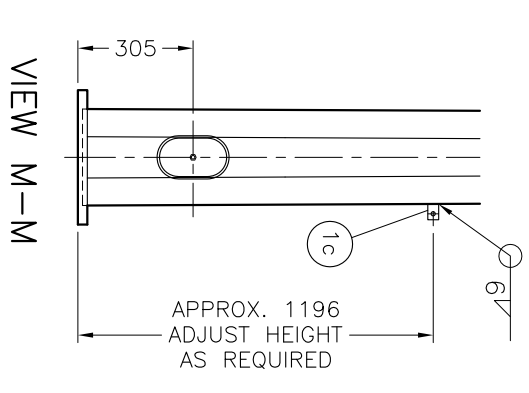
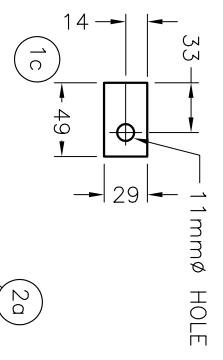
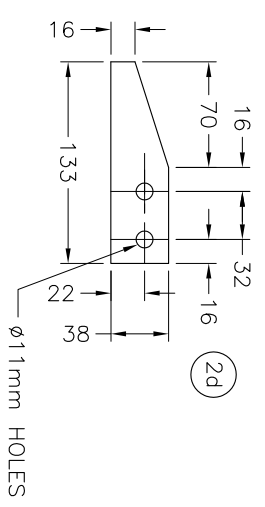
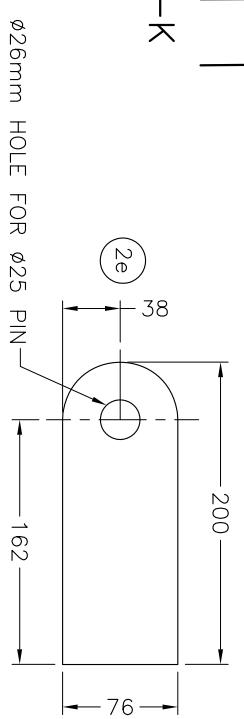
VIEW K-K



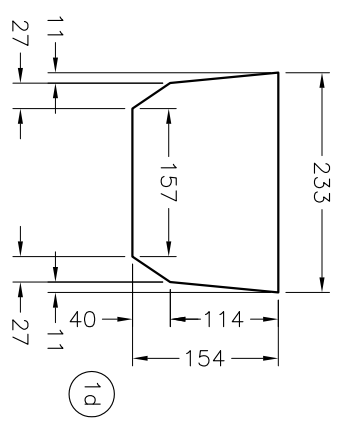
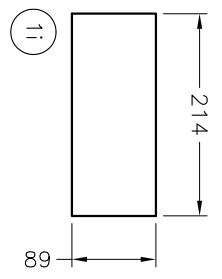
PIN DETAIL



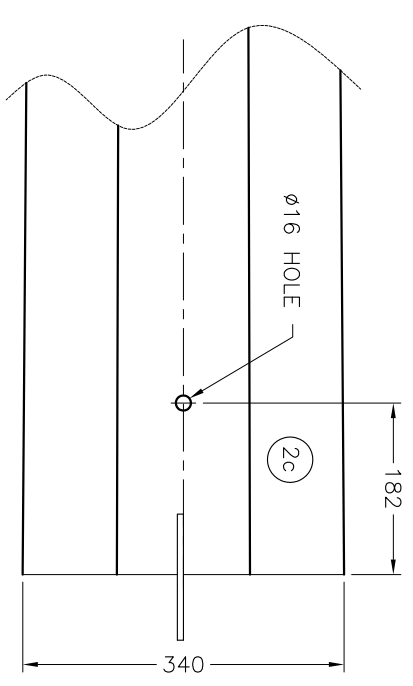
STIFFENER DETAIL



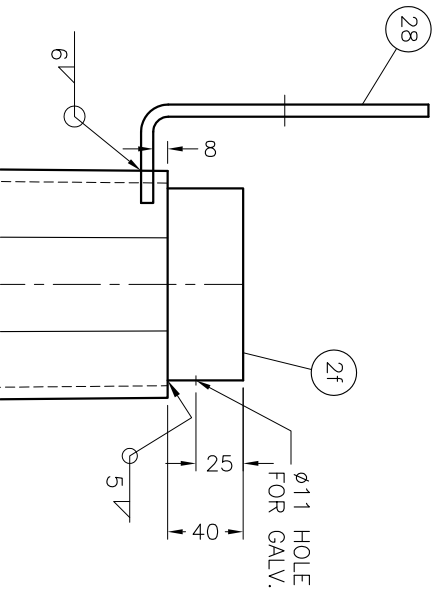
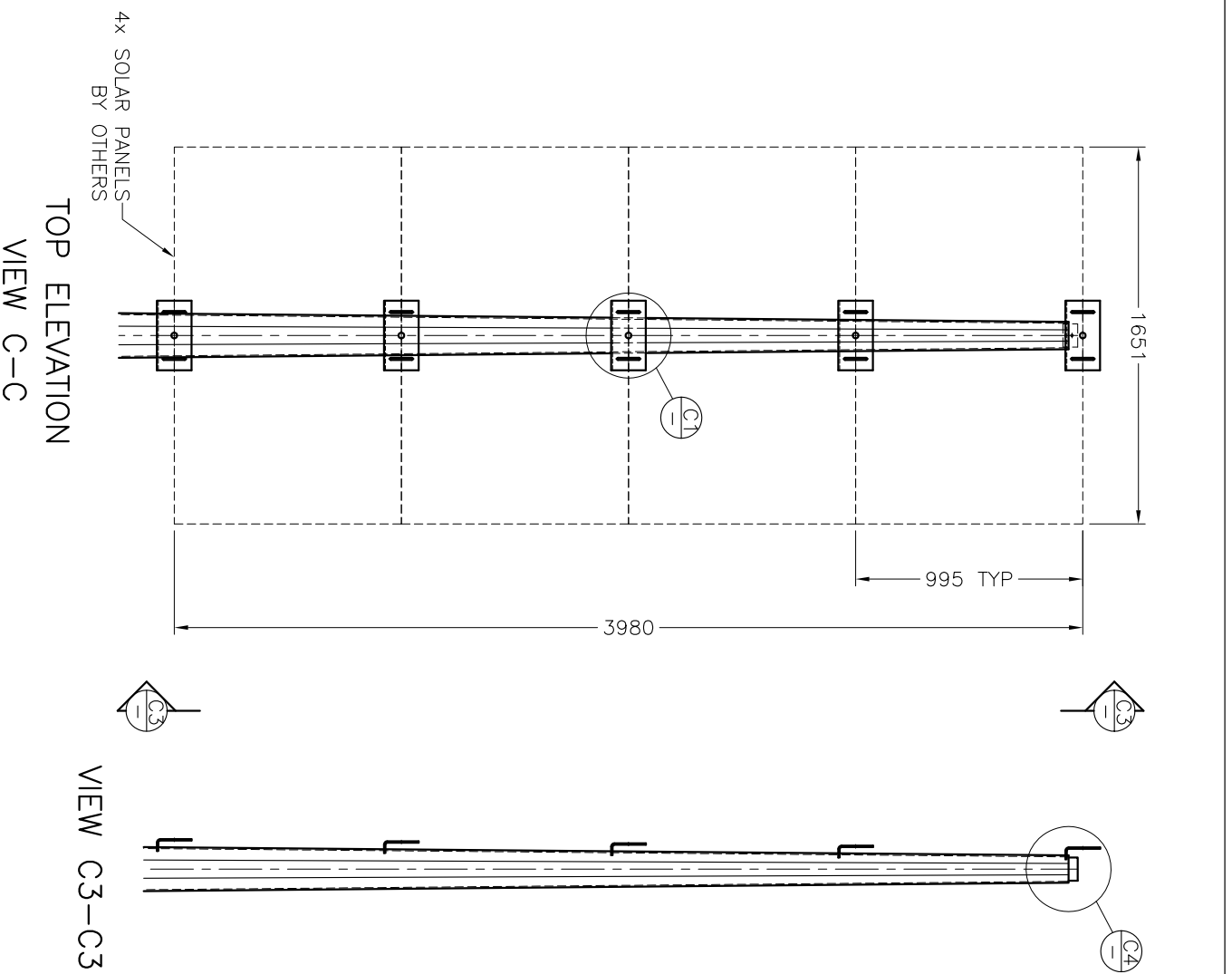
DETAIL F



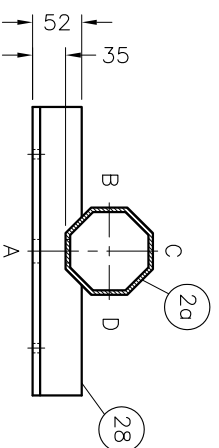
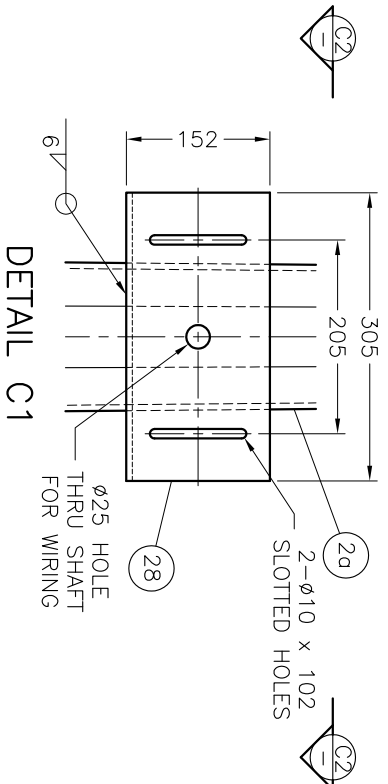
VIEW D-D



B BRACKET ORIENTATION		MAR15/11	SOLAR PRODUCTION EQUIPMENT				
A AS PER CMT		MAR11/11					
REV	DATE	DATE	OCTAGONAL HINGE POLE - NOH 40 FOR 4 SOLAR PANELS				
DRAWN	DATE	DATE					
HW	MAR09/11	MAR09/11					
CHECKED	MAR09/11	MAR09/11					
CLY	CONTRACTOR		SIZE	STOCK NO.	DWG. NO.	REV	
			B	-	2 - 110 - 9569	B	
SCALE		S.O.	SHEET		2	OF	3



PART NUMBER	ITEM NO.	NO. ROD	MATERIAL	DESCRIPTION	WEIGHT	
					UNIT	TOTAL
	1a	1	CSA G40.21 300W	PL 38.1 x 480 x 480 (BASE PLATE)	34.9	34.9
	1b/2a	1	CSA G40.21 350W	PL 6.4 x 366 x 1095 x 12192 LG (8 SIDED SHAFT)	444.0	444.0
	1c	1	CSA G40.21 300W	FB 6.4 x 49 x 29 w/ 1 - ø11 HOLE FOR ø3/8" BOLT	0.1	0.1
	1d	1	CSA G40.21 300W	PL 7.9 x 154 x 233 (TRAPEZOID SUPPORT PLATE)	2.0	2.0
	1e	1	CSA G40.21 300W	FB 6.4 x 51 x 375 (SMALL H/H RIM)	1.2	1.2
	1f	2	CSA G40.21 300W	PL 7.9 x 37 x 135 (STIFFENER)	0.4	0.8
	1g	1	CSA G40.21 300W	PL 6.4 x 75 x 125 (REINFORCEMENT PLATE)	0.5	0.5
	1h	1	ASTM A53 GR.B	ø33 O.D. SCH. 40 PIPE (3.4 WALL) x 239 LG	0.6	0.6
	1i	2	CSA G40.21 300W	PL 7.9 x 89 x 214 (STIFFENER)	0.8	1.6
	2c	1	CSA G40.21 350W	PL 7.9 x 497 x 677 x 5030 LG (CANTILEVER SHELL)	183.4	183.4
	2d	1	CSA G40.21 300W	FB 6.4 x 38 x 133, w/ 2 - ø11 HOLES FOR ø3/8" BOLTS	0.2	0.2
	2e	2	CSA G40.21 300W	FB 16 x 76 x 200 (w/ ø26mm HOLE FOR ø25mm PIN)	1.8	3.6
	2f	1	ASTM A53 GR.B	ø102 O.D. SCH. 40 PIPE (5.7 WALL) x 65 LG	0.9	0.9
	10	1	CSA G40.21 300W	FB 6.4 x 38 x 140 TAB, D&T FOR ITEM 14	0.3	0.3
	11	1	STAINLESS STEEL	HEX BOLT ø3/8" x 1 1/2" LG	0.0	0.0
	12	1	CSA G40.21 300W	ø25 PIN x 309 LG (w/ 2 - 3mm DRILLED HOLES)	1.3	1.3
	13	2	CSA G40.21 300W	ø3.0 PIN x 38 LG	0.0	0.0
	14	1	STAINLESS STEEL	HEX BOLT ø3/8" x 3" LG	0.0	0.0
	15	1	STAINLESS STEEL	FLATWASHER ø3/8"	0.0	0.0
	17	2	STAINLESS STEEL	HEX NUT ø3/8"	0.1	0.2
	18	2	STAINLESS STEEL	FLATWASHER ø3/8"	0.0	0.0
	19	1	STAINLESS STEEL	LOCKWASHER ø3/8"	0.1	0.1
	20	1	CSA G40.21 300W	PL 3.0 x 203 x 127 (SMALL H/H COVER)	0.5	0.5
	25	1	CSA G40.21 300W	REDI ROD ø1/2" x 380 LG, FULL THREADED GALV.	0.4	0.4
	26	2	ASTM A194	HEX NUT ø1/2", GALV.	0.2	0.4
	27	2	ASTM F436	FLATWASHER ø1/2", GALV.	0.0	0.0
	28	5	CSA G40.21 300W	PL 6.4 x 192 x 305 (BENT TO L SHAPE)	2.9	14.5
	29	1	PLASTIC	TOP CAP FOR ø102 O.D. PIPE	0.0	0.0
TOTAL WEIGHT (kg)						691.5



SOLAR PRODUCTION EQUIPMENT			
OCTAGONAL HINGE POLE - NOH 40 FOR 4 SOLAR PANELS			
REV	DATE	DWG. NO.	REV
HW	MAR09/11	2 - 110 - 9569	B
CHECKED	DATE	SCALE	
CLY	MAR09/11	B	
CONTRACTOR		S.O.	
		11411	
		SHEET 3	OF 3